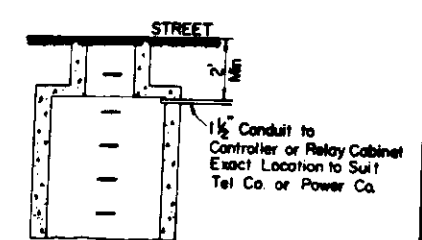
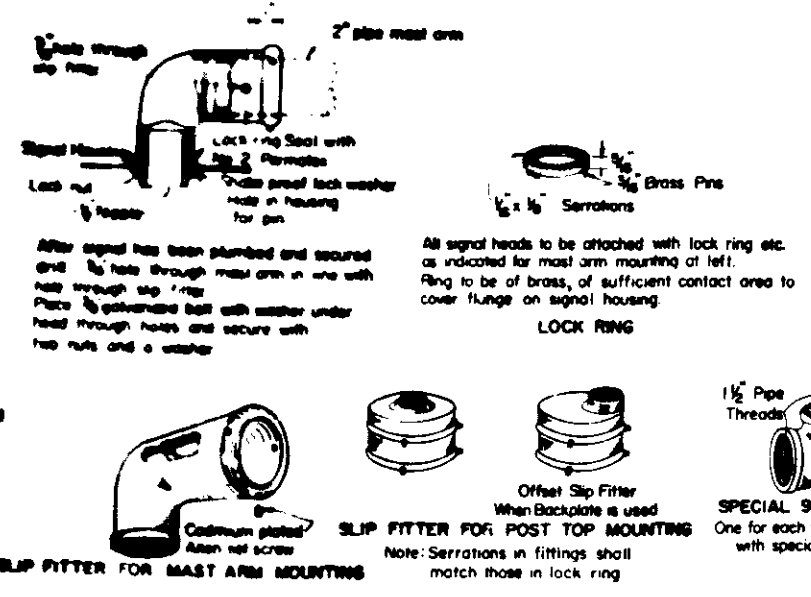
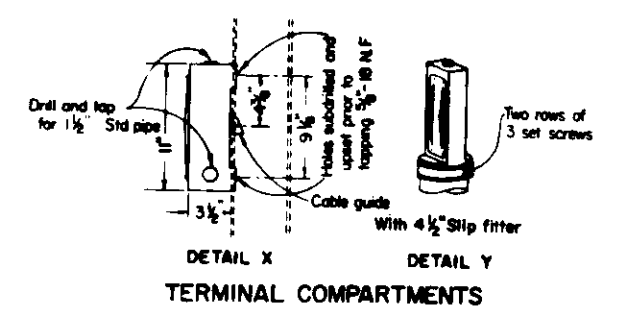
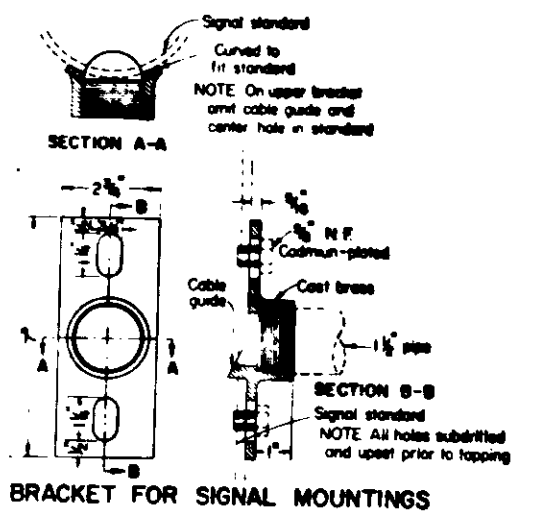
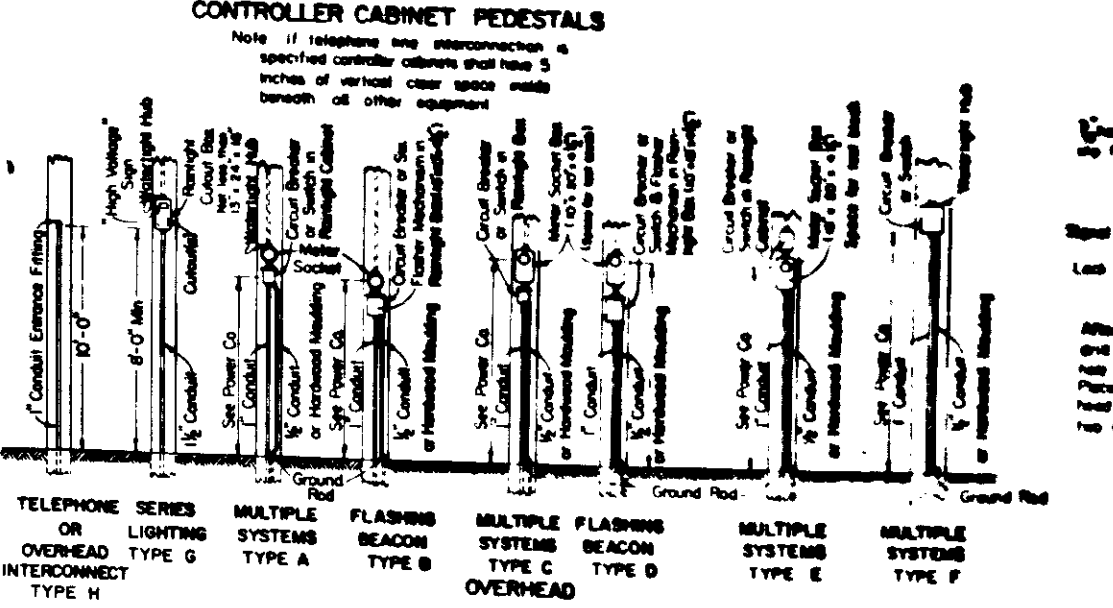
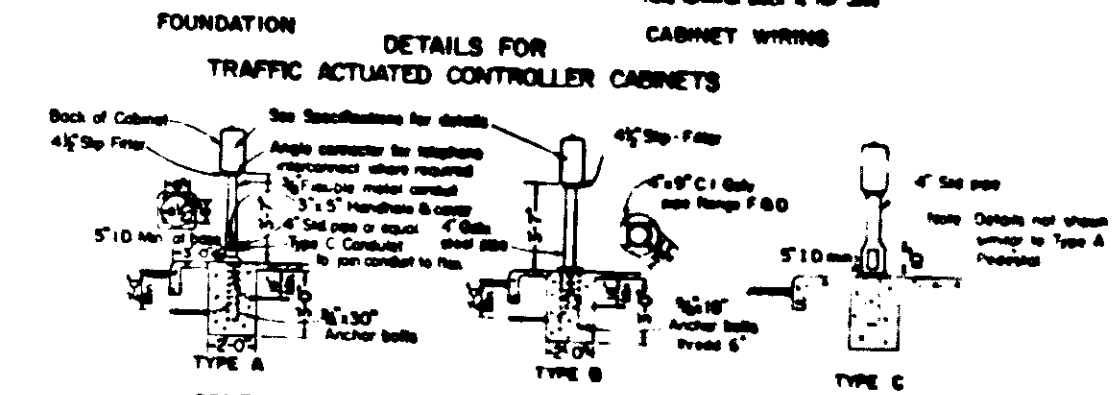
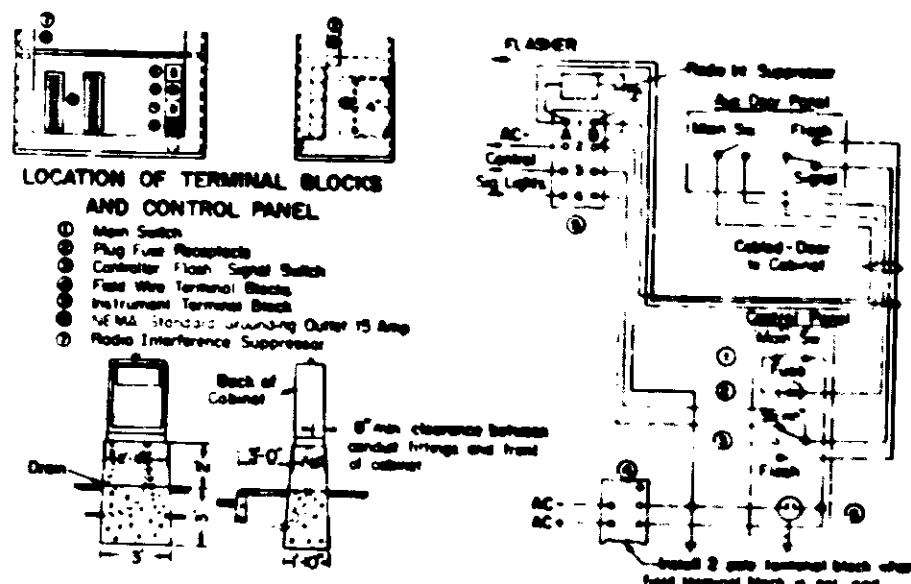
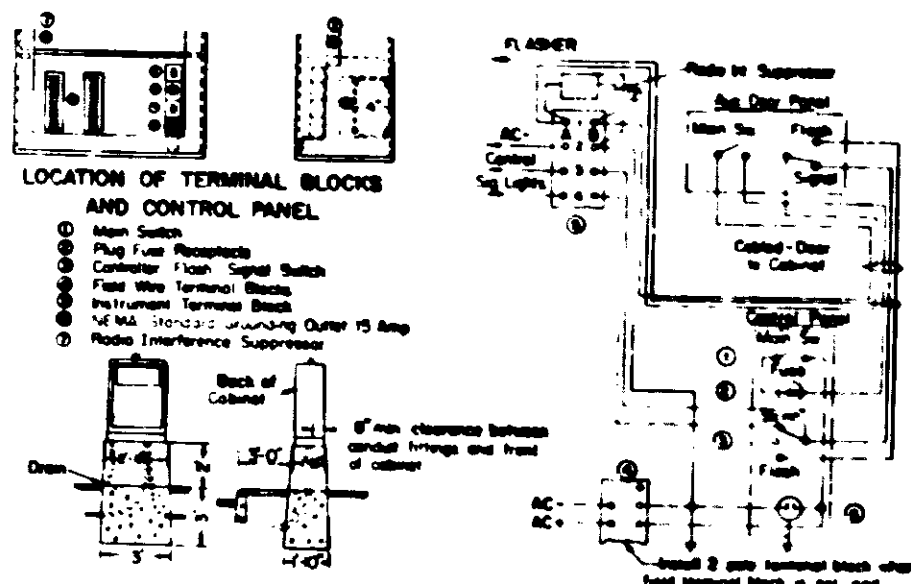


February 1, 1956
 [Signature]

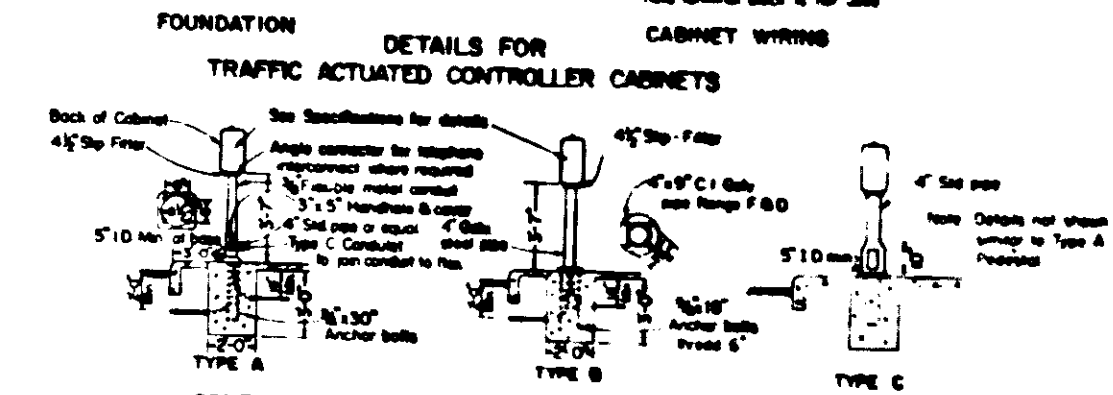


STATE OF CALIFORNIA
 DEPARTMENT OF PUBLIC WORKS
 DIVISION OF HIGHWAYS
STANDARD DETAILS NO. 1
 TRAFFIC SIGNALS AND
 HIGHWAY LIGHTING
 INSTALLATIONS

February 1, 1956
LeMay

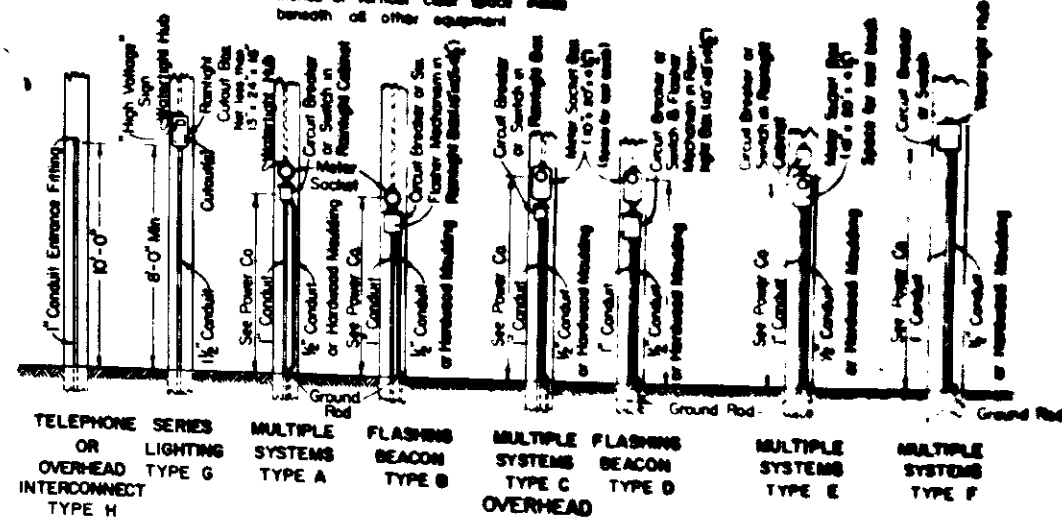


- LOCATION OF TERMINAL BLOCKS AND CONTROL PANEL**
- Main Switch
 - Plug Fuse
 - Controller
 - Flasher
 - Radio Int. Suppressor
 - Terminal Block
 - Instrument Terminal Block
 - NEMA Standard Grounding Outlet 15 Amp

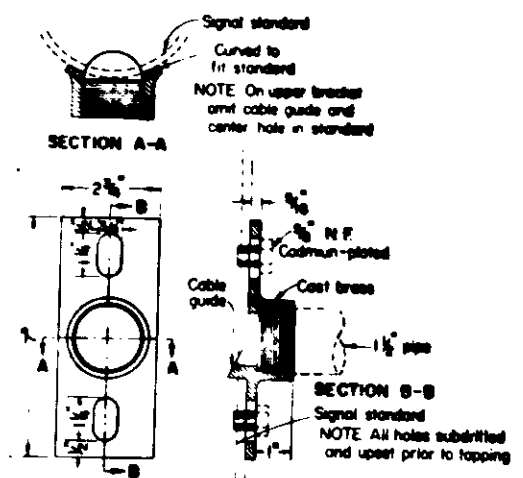


CONTROLLER CABINET PEDESTALS

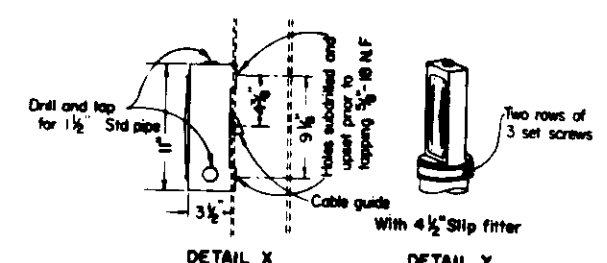
Note: If telephone interconnection is specified controller cabinets shall have 5 inches of vertical clear space inside beneath all other equipment.



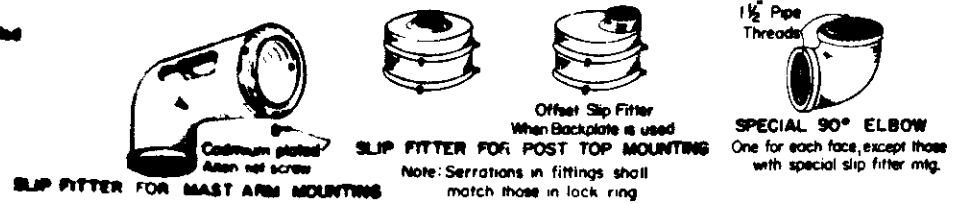
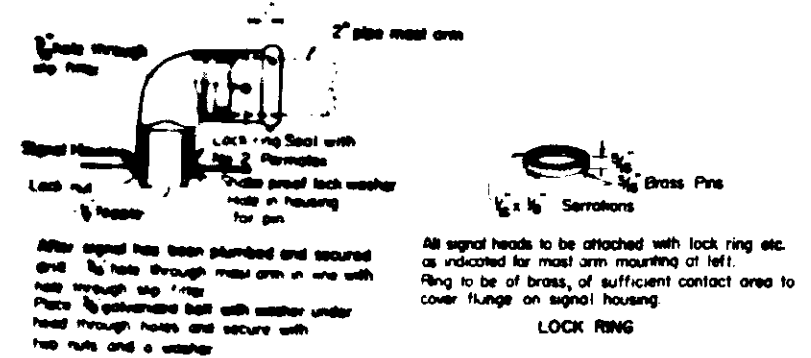
ELECTRICAL SERVICE DETAILS



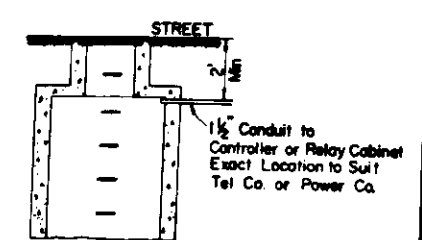
BRACKET FOR SIGNAL MOUNTINGS



DETAIL X DETAIL Y
TERMINAL COMPARTMENTS



SIGNAL HEAD ATTACHMENT DETAILS



MANHOLE UNDERGROUND SERVICE

STATE OF CALIFORNIA
 DEPARTMENT OF PUBLIC WORKS
 DIVISION OF HIGHWAYS
STANDARD DETAILS NO. 1
 TRAFFIC SIGNALS AND
 HIGHWAY LIGHTING
 INSTALLATIONS